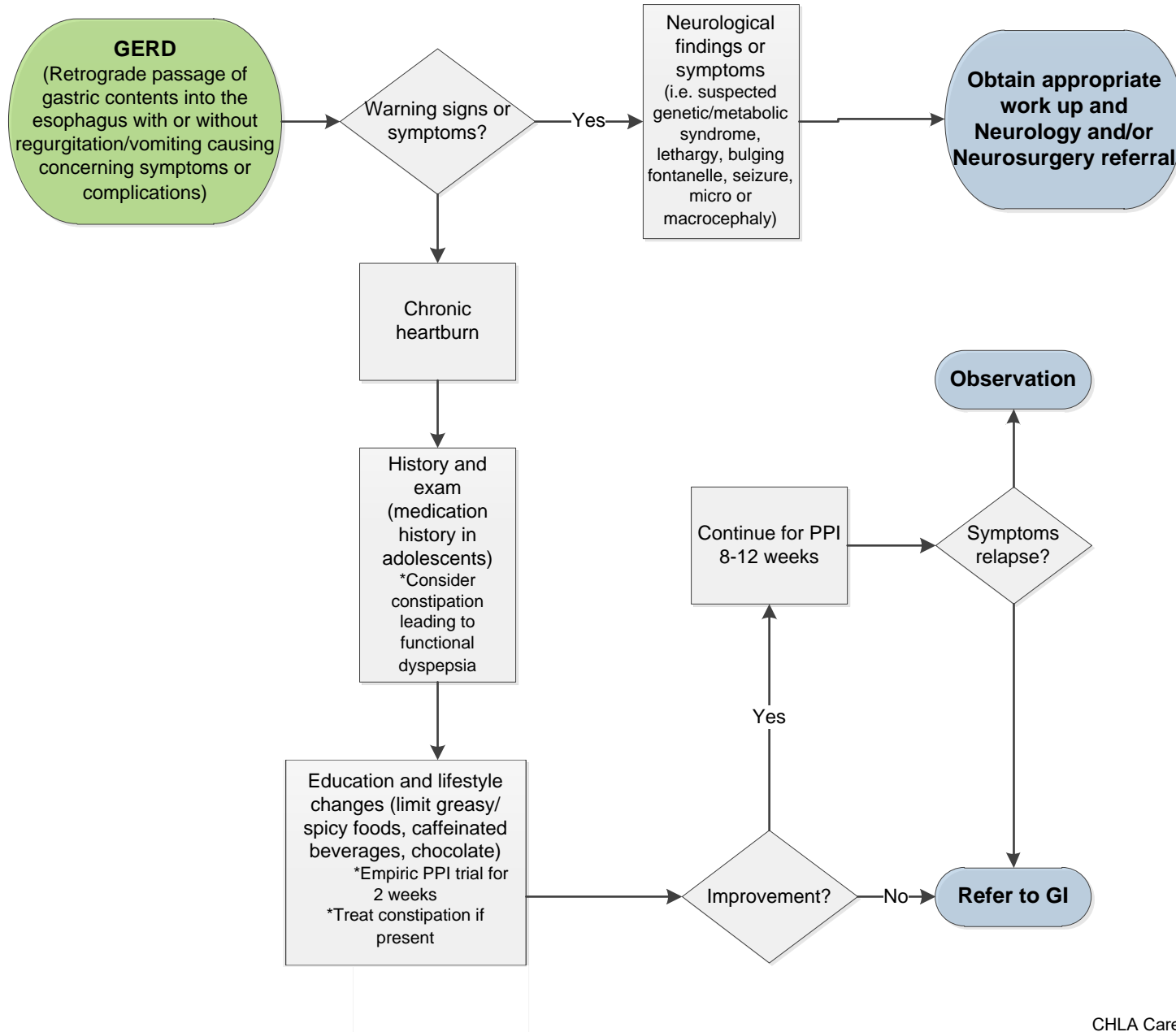


# GERD in Non-Infants



- GI Warning Signs and Symptoms**
- Bilious vomiting
  - Hematemesis
  - Hematochezia
  - Forceful or projectile vomiting
  - Onset of vomiting after 6 months of life
  - Failure to thrive
  - Diarrhea
  - Constipation
  - Hepatosplenomegaly
  - Abdominal tenderness or distension