

Short Stature

Calculate Mid-Parental Target Height (MPTH) in Inches

Girl: $[(\text{father height} + \text{mother height})/2] - 2.5 \text{ in.}$

Boy: $[(\text{father height} + \text{mother height})/2] + 2.5 \text{ in.}$

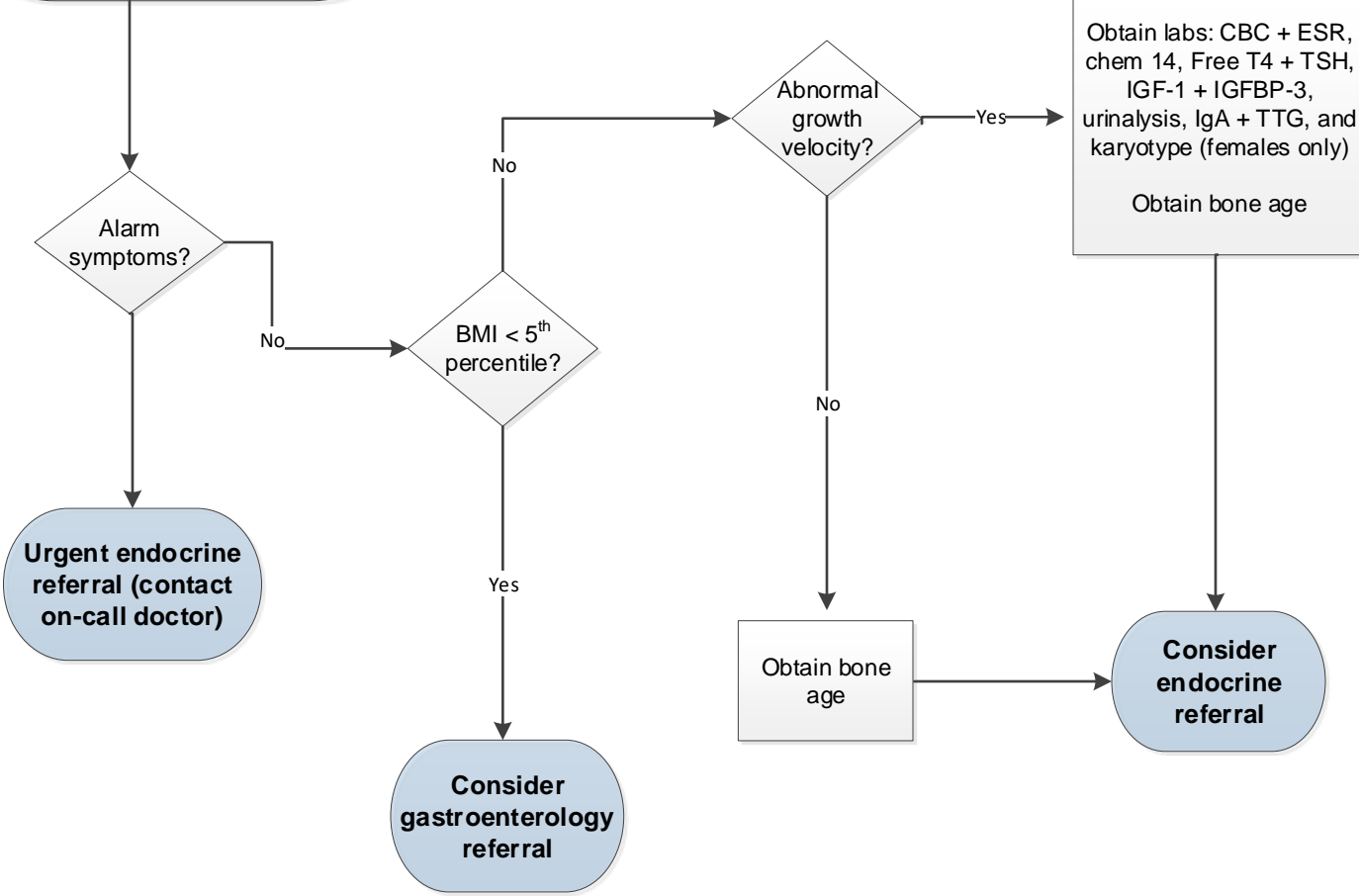
Alarm Symptoms

- Abrupt decreased growth
- Severe or early morning headaches
- Vomiting
- Seizures
- Vision changes

Height > 2 SD below the mean for age and gender

Height < 3rd percentile

Height > 4 inches below MPTH



Normal Growth Velocity

2-3 years old: 3 inches per year

3-4 years old: 2.75 inches per year

4-10 years old (or until puberty): 2-2.4 inches per year

Puberty: 3-5 inches per year