

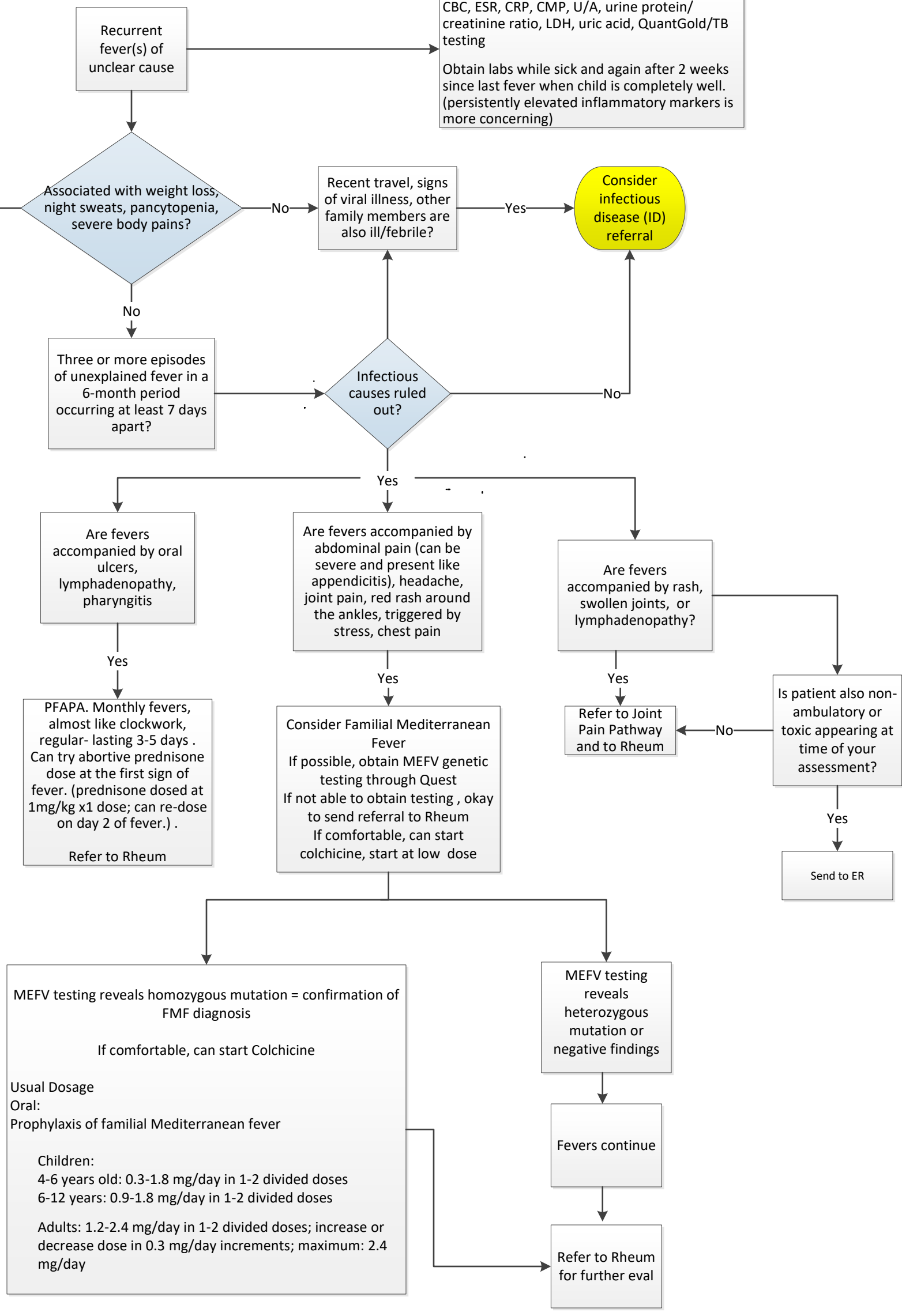
Fever

Periodic Fevers/ Recurrent Fever Syndromes

Labs to obtain:
CBC, ESR, CRP, CMP, U/A, urine protein/
creatinine ratio, LDH, uric acid, QuantGold/TB
testing
Obtain labs while sick and again after 2 weeks
since last fever when child is completely well.
(persistently elevated inflammatory markers is
more concerning)

Consider
malignancy?
ER vs URGENT
hematology
referral

Consider
infectious
disease (ID)
referral



If none of the above symptoms are present but fevers continue with regular pattern, can refer to Rheum